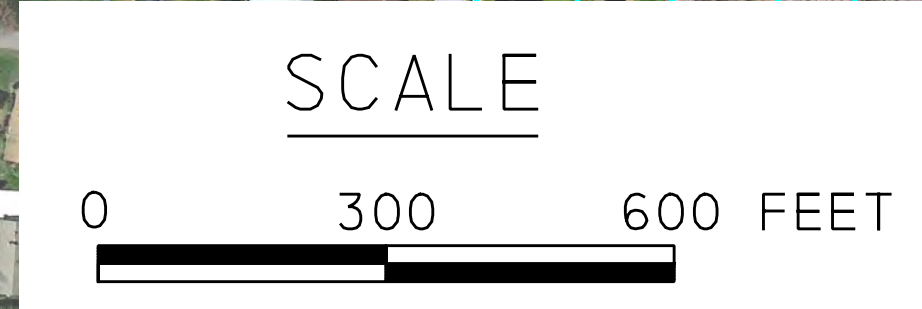
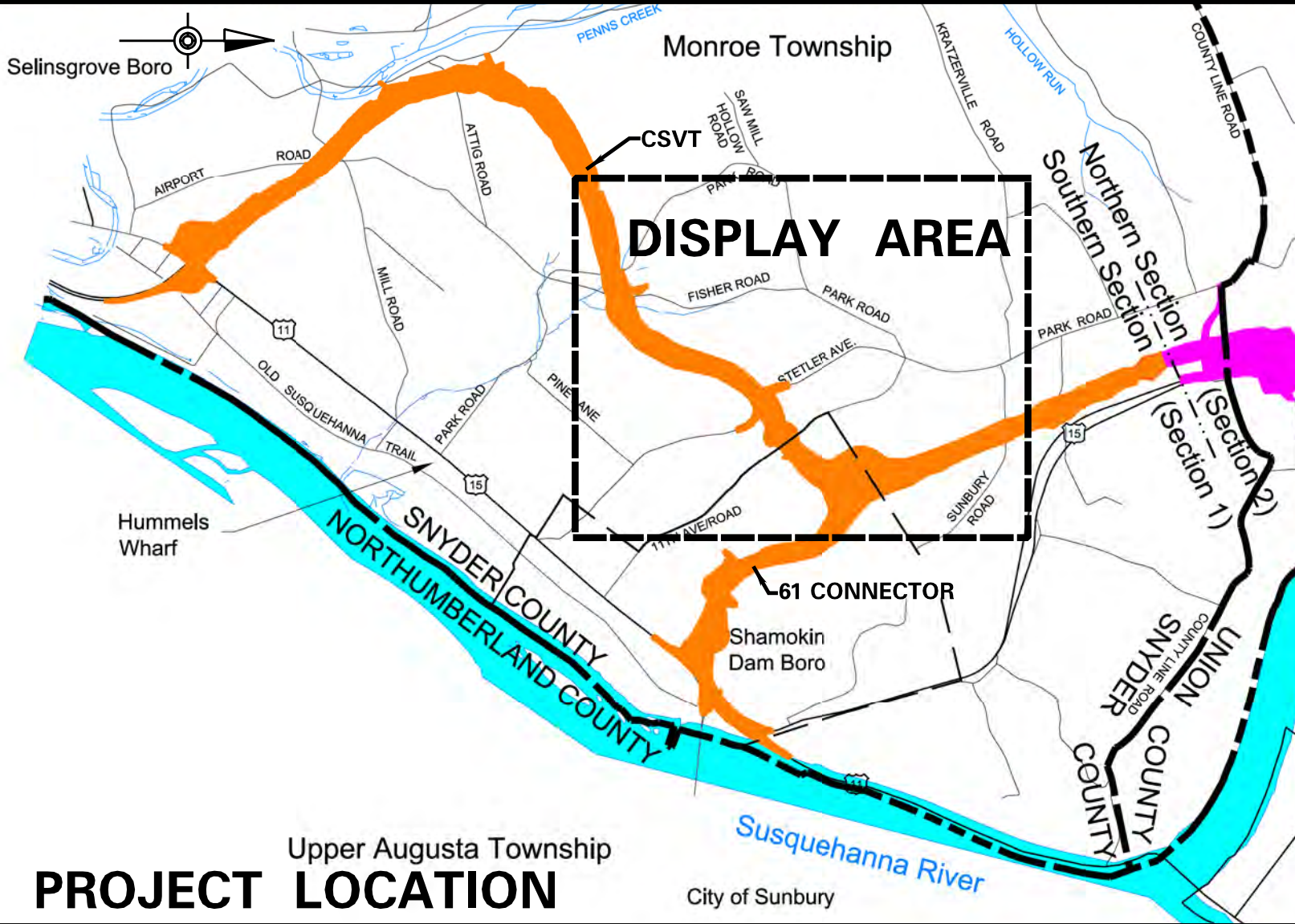
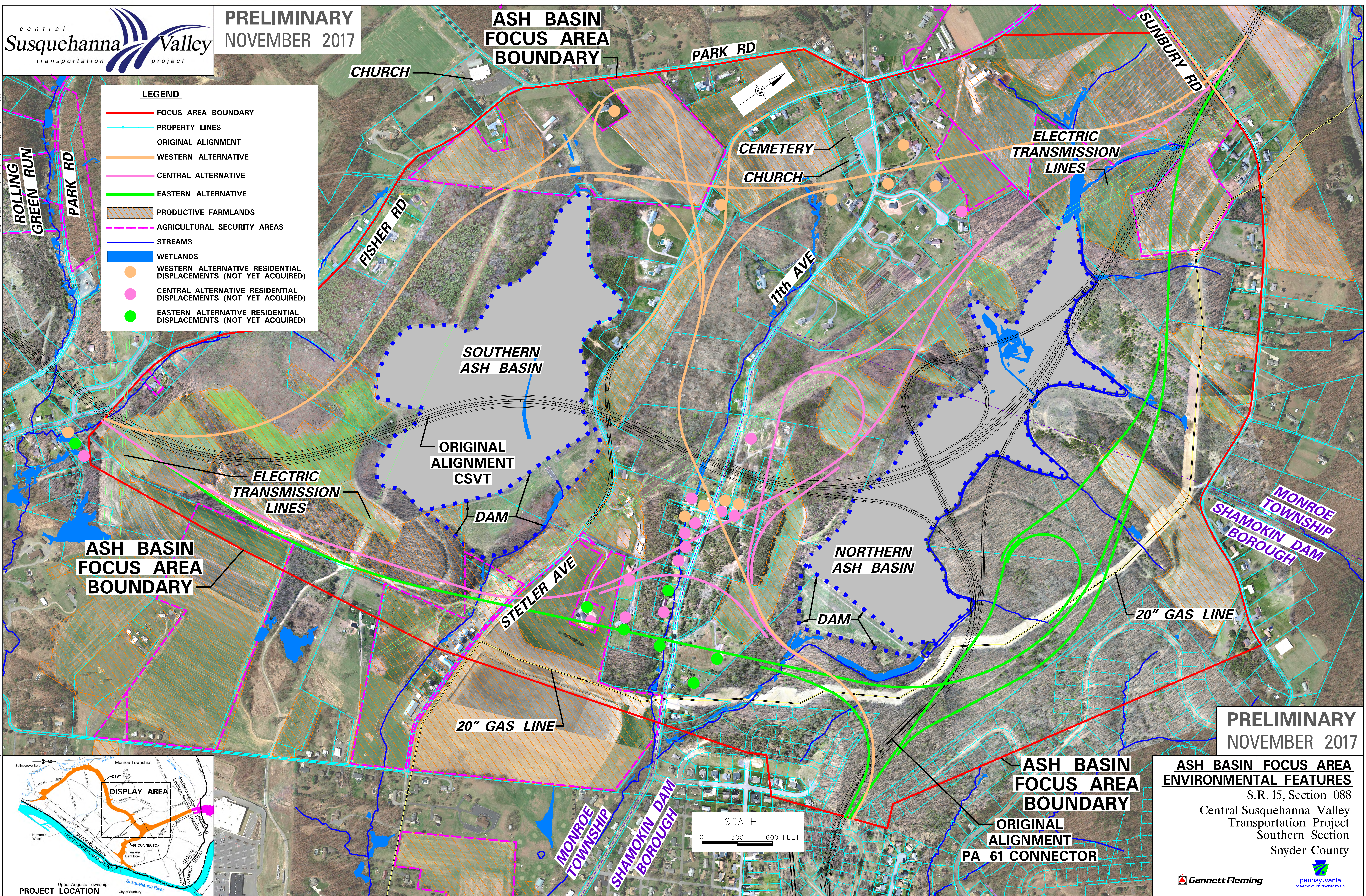


**ASH BASIN
FOCUS AREA
BOUNDARY**

LEGEND

- FOCUS AREA BOUNDARY
- PROPERTY LINES
- ORIGINAL ALIGNMENT
- WESTERN ALTERNATIVE
- CENTRAL ALTERNATIVE
- EASTERN ALTERNATIVE
- PRODUCTIVE FARMLANDS
- AGRICULTURAL SECURITY AREAS
- STREAMS
- WETLANDS
- WESTERN ALTERNATIVE RESIDENTIAL DISPLACEMENTS (NOT YET ACQUIRED)
- CENTRAL ALTERNATIVE RESIDENTIAL DISPLACEMENTS (NOT YET ACQUIRED)
- EASTERN ALTERNATIVE RESIDENTIAL DISPLACEMENTS (NOT YET ACQUIRED)

PLOTTED: 11/17/2017 10:11:12 AM
FILE NAME: c:\pwworking\ng\fpw01\p\proj\baugh\40771396\Board\10-Env\ir\Features\Nov2017.dgn



**ASH BASIN FOCUS AREA
ENVIRONMENTAL FEATURES**
S.R. 15, Section 088
Central Susquehanna Valley
Transportation Project
Southern Section
Snyder County